



# RIVER MURRAY WEEKLY REPORT

FOR THE WEEK ENDING WEDNESDAY, 08 SEPTEMBER 2010

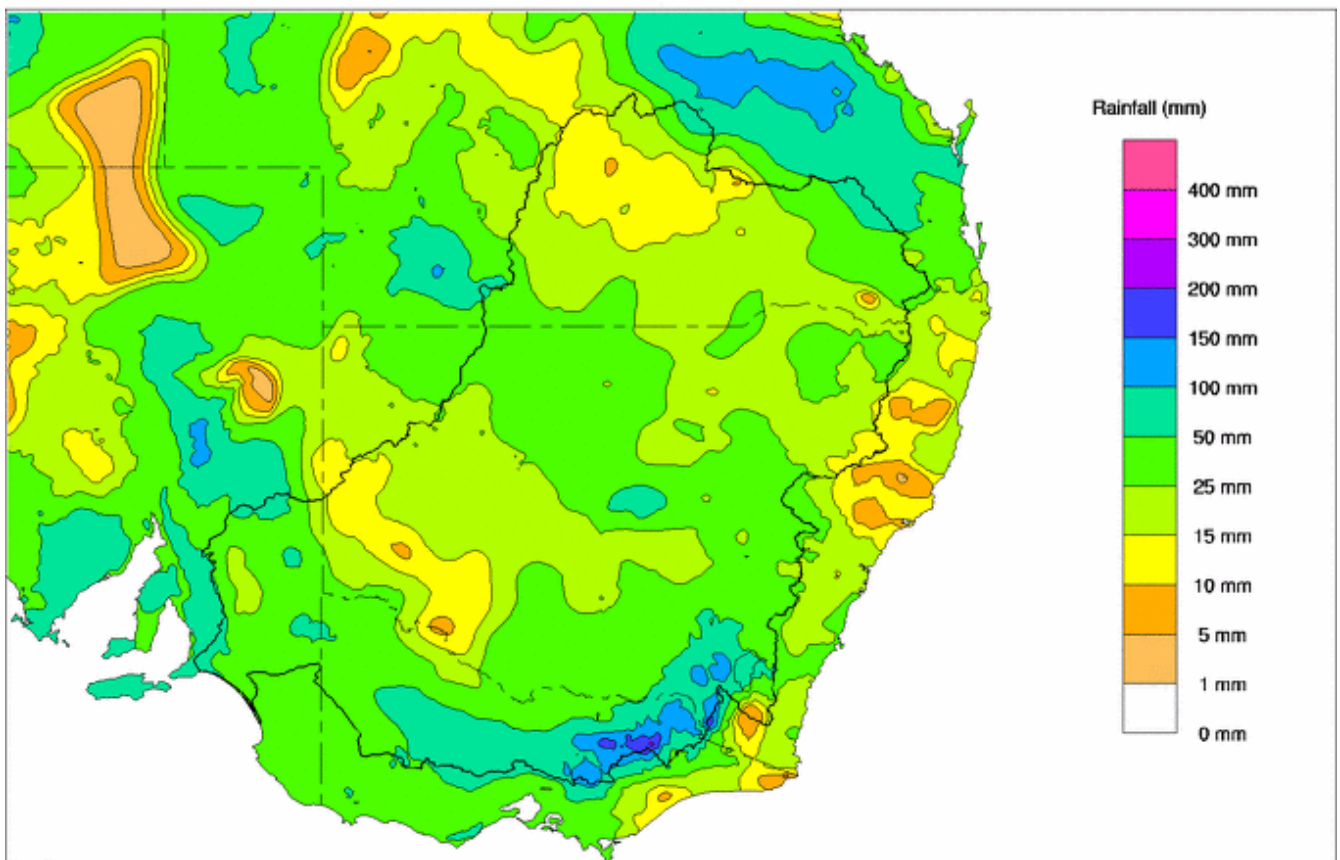
Trim Ref: D10/26295

## Rainfall and Inflows

There has been widespread rain across the Murray-Darling Basin in the last week, most of which fell on the weekend of 4–5 September. Good falls were recorded in the upper Murray with large parts of the Kiewa, Ovens and Goulburn River catchments receiving in excess of 100 mm. Falling on wet catchments, the rain caused major flooding in parts of northern Victoria. The Ovens River at Wangaratta reached a peak of about 120,000 ML/day and the Goulburn River at Shepparton has peaked at about 90,000 ML/day.

Inflows to Hume Reservoir peaked at about 90,000 ML/day while Dartmouth Reservoir had a peak daily inflow of about 45,000 ML/day. Murray system inflows during the last week totalled 1,090 GL, which is more than for the entire water year of 2006-07.

Murray Darling Rainfall Totals (mm) Week Ending 8th September 2010  
Product of the National Climate Centre



<http://www.bom.gov.au>

© Commonwealth of Australia 2010, Australian Bureau of Meteorology

Issued: 08/09/2010



## River Flow Outlook

Whilst this, and subsequent Weekly Reports, will provide general advice on river flows and outlooks the Bureau of Meteorology is responsible for flood forecasting and readers are encouraged to visit [www.bom.gov.au](http://www.bom.gov.au) for the latest advice. It is too early for accurate flow and level predictions to be made in the mid and lower reaches of the River Murray as peak flows will take several weeks to travel downstream and will attenuate as they pass through the very large floodplain forests.

However it is clear that whilst major flooding has been observed in some Victorian tributaries the impacts in the Murray will be more modest. High inflow rates have been observed from the Ovens River but for a very limited duration and it is expected that the Barmah-Millewa Forest will retain much of this floodwater providing a significant beneficial watering of floodplains and wetlands.

Further downstream there will be significant beneficial flooding of the Gunbower, Koondrook and Perricoota Forests when the higher flows arrive from the Goulburn River. In times of flood the bulk of flow in the mid river passes down the Wakool and Edward systems with flows at Swan Hill exceeding 25,000 ML/day in only significant floods. Given that it is now 10 years since there has been flooding in the mid Murray and Wakool it could be expected that large volumes of flood water will be retained by floodplains and wetlands.

Despite the current uncertainty of flow forecasts in the lower Murray it is apparent that the Lower Lakes will fill allowing the first significant releases through the Murray Mouth since 2006.

## River Operations

MDBA active storage (including Menindee Lakes) is currently 5,042 GL, which is an increase of 576 GL since last week. This is the highest active storage since January 2006, and will continue increasing during the next few weeks due to significant volumes of water in transit.

Total storage in Dartmouth Reservoir is currently 1,646 GL (42 % capacity), while Hume Reservoir is currently at 1,973 GL (65% capacity). Releases from these two reservoirs remain at their normal minimums.

Yarrowonga Weir has been passing the high inflows from the Ovens and Kiewa Rivers. Flow through the weir reached a peak of 112,000 ML/day early on Wednesday 8 September, (see Figures 1 and 2) and is now receding. The pool level at the weir has fluctuated between 124.5 and 124.8 m AHD during the week, as part of the flood operations.

Due to the high flows downstream of Yarrowonga Weir, large areas of the Barmah-Millewa Forest will be inundated during the next few weeks. This will be the best watering of these forests for at least 10 years. Higher flows are expected on the Edward River and the flow at Toonalook, upstream of Deniliquin, is currently 6,050 ML/day and will continue rising during the coming week.

At Echuca, the high inflows from the Goulburn and Campaspe Rivers combined with high River Murray flows are likely to cause minor flooding in the next few days. For further information, see the Bureau of Meteorology flood warnings. At Torrumbarry Weir, the flow is currently 32,300 ML/day and will rise during the coming week.

At Euston, the flow is currently 23,500 ML/day and rising. It is difficult to accurately forecast the peak flow at this site and updates will be provide in coming weeks.

Flows through the Mildura and Wentworth Weirs are expected to gradually rise over the next 4-5 weeks. Further information on forecast river flows is available from the MDBA website (see [http://www.mdba.gov.au/water/river\\_info/river\\_flows](http://www.mdba.gov.au/water/river_info/river_flows)).

Menindee Lakes are currently at 1,625 GL (94% capacity), and have risen 40 GL during the week. Higher inflows from the Darling River are expected during the next 4-5 weeks however at this stage all inflows are expected to be able to be captured as the lakes are capable of being surcharged to a





storage volume of 2050 GL. Releases from Menindee Lakes will remain at the minimum of 200 ML/day until the higher flows down the River Murray have passed.

The 'Unregulated Flow Event', declared for most reaches of the River Murray in late August, has been extended and regular updates will be provided as flows into South Australia continue to be assessed.

Storage in Lake Victoria has risen by 54 GL to 488 GL (72% capacity) and is expected to continue increasing during the next few weeks with the high inflows.

The water level in Lake Alexandrina is currently +0.39 m AHD and, with increasing inflows, will continue rising during September. It is expected that Lake Alexandrina will reach full supply level (+0.75 m AHD) in early October.

Water is currently being released to the Coorong through the Goolwa Barrage. This release is possible due to high inflows from Finnis River and Currency Creek, and will initiate improved environmental conditions in the Coorong.

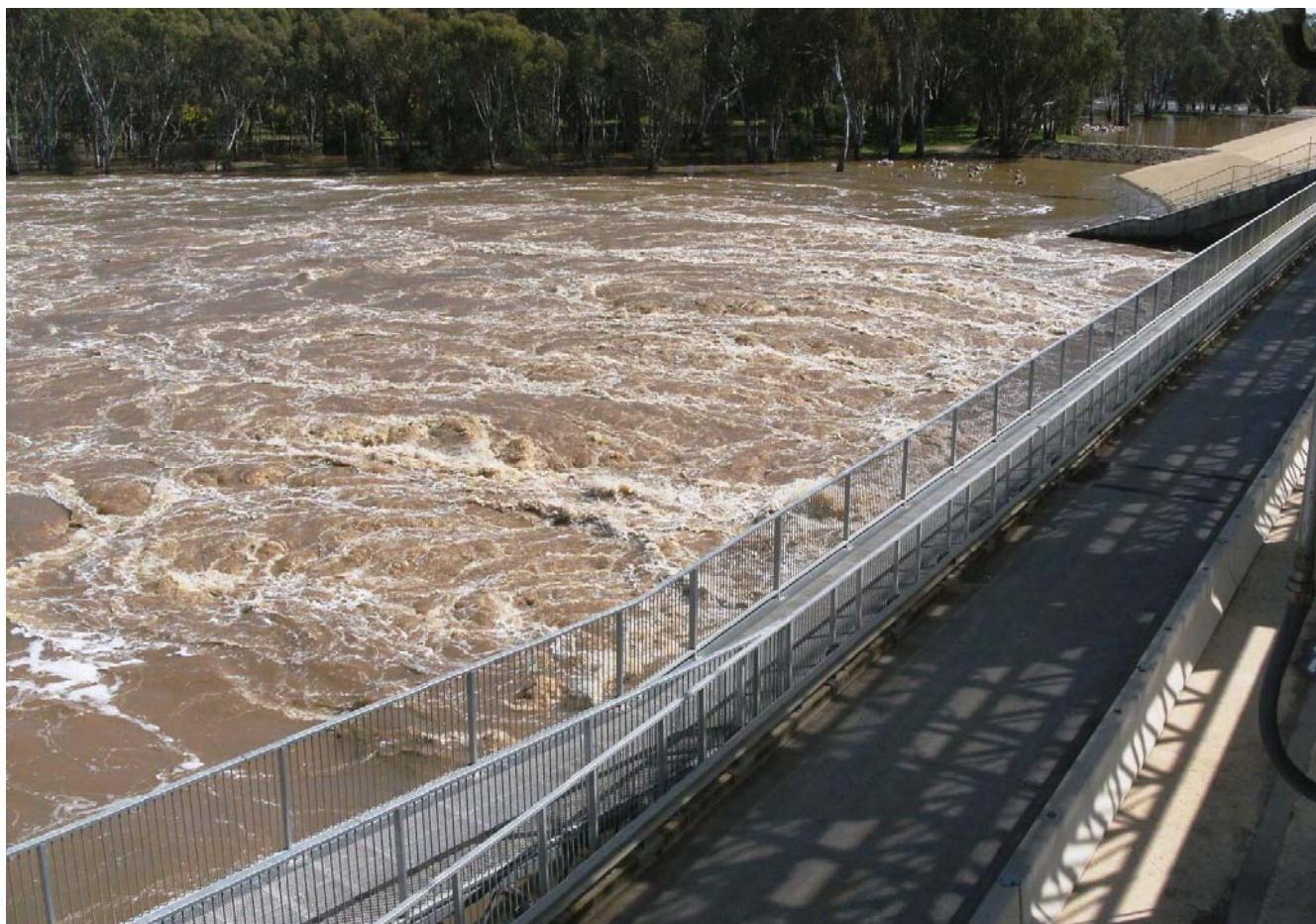


Figure 1 Flood waters downstream of Yarrawonga Weir at over 100 000 ML/Day, 8<sup>th</sup> September 2010.  
Photos: Pat Doyle, Goulburn-Murray Water





Figure 2 Flood waters flow downstream of Yarrawonga Weir on the River Murray, 8<sup>th</sup> September 2010.  
Photos: Pat Doyle, Goulburn-Murray Water

**For media inquiries contact: Sam Leone on 02 6279 0141**

DAVID DREVERMAN  
Executive Director, River Murray



**Week ending Wednesday 08 Sep 2010**

**Water in Storage**

MDBA Storages	Full Supply Level (m AHD)	Full Supply Volume (GL)	Current Storage Level (m AHD)	Current Storage		Dead Storage (GL)	MDBA Active Storage (GL)	Change in Total Storage for the week (GL)
				(GL)	%			
Dartmouth Reservoir	486.00	3 906	442.71	1 646	42%	80	1 566	+141
Hume Reservoir	192.00	3 038	186.03	1 973	65%	30	1 943	+341
Lake Victoria	27.00	677	25.34	488	72%	100	388	+54
Menindee Lakes		1 731 *		1 625	94%	(480 #)	1 145	+40
<b>Total</b>		<b>9 352</b>		<b>5 732</b>	<b>61%</b>	<b>--</b>	<b>5 042</b>	<b>+576</b>

\* Menindee surcharge capacity 2050 GL

% of Total Active MDBA Storage = **58%**

# NSW takes control of Menindee Lakes when storage falls below 480 GL, and control reverts to MDBA when storage next reaches 640 GL

\*\* All Data is rounded to nearest GL \*\*

**Major State Storages**

Burrinjuck Reservoir	1 026	842	82%	3	839	+130
Blowering Reservoir	1 631	1 315	81%	24	1 291	+112
Eildon Reservoir	3 334	1 785	54%	100	1 685	+313

**Snowy Mountains Scheme**

Snowy diversions for week ending 07-Sep-2010

Storage	Active storage (GL)	Weekly change (GL)	Diversion (GL)	This week	From 1 May 2010
Lake Eucumbene - Total	N/A	N/A	Snowy-Murray	N/A	N/A
Snowy-Murray Component	N/A	N/A	Tooma-Tumut	N/A	N/A
Target Storage	N/A		Net Diversion	N/A	N/A
			Murray 1 Release	N/A	N/A

**Major Diversions from Murray and Lower Darling (GL) \***

New South Wales	This week	From 1 July 2010	Victoria	This week	From 1 July 2010
Murray Irrig. Ltd (Net)	n/a	25.0	Yarrowonga Main Channel (net)	0.8	2.0
Wakool Sys Allowance	1.6	6.0	Torrumbarry System + Nyah (net)	0.0	57.0
Western Murray Irrig.	0.0	0.0	Sunraysia Pumped Districts	0.2	2.0
Licensed Pumps	0.7	4.0	Licensed pumps - GMW (Nyah+u/s)	0.2	1.0
Lower Darling	6.5	11.0	Licensed pumps - LMW	3.0	17.0
<b>TOTAL</b>	<b>8.8</b>	<b>46.0</b>	<b>TOTAL</b>	<b>4.2</b>	<b>79.0</b>

\* Figures derived from Estimates and Monthly Data. Please note that not all data may have been available at the time of creating this report.

\*\* All Data is rounded to nearest 100 ML for the above\*\*

**Flow to South Australia (GL)**

Entitlement this month	135.0 *	
Flow this week	89.0	(12 700 ML/day)
Flow so far this month	98.5	
Flow last month	219.5	

\* Flow to SA will be greater than entitlement for September due to Additional Dilution Flow and Unregulated Flows

**Salinity (EC)**

(microsiemens/cm @ 25° C)

	Current	Average over the last week	Average since 1 August 2010
Swan Hill	220	200	110
Euston	140	130	100
Red Cliffs	120	110	100
Merbein	100	80	80
Burtundy (Darling)	280	280	260
Lock 9	130	120	120
Lake Victoria	140	140	170
Berri	170	200	200
Waikerie	180	200	240
Morgan	220	250	300
Mannum	320	340	350
Murray Bridge	370	390	340
Milang (Lake Alex)	3 210	3 320	3 580
Poltalloch (Lake Alex)	1 910	2 140	1 890
Meningie (Lake Alb.)	12 510	12 740	12 410
Goolwa Barrages	12 320	13 900	18 230



**Week ending Wednesday 08 Sep 2010**

**River Levels and Flows**

River Murray	Minor Flood stage (m)	Gauge height		Flow (ML/day)	Trend	Average flow this week (ML/day)	Average flow last week (ML/day)
		local (m)	(m AHD)				
Khancoban	-	-	-	9 660	F	12 730	4 870
Jingellic	4.0	4.92	211.44	45 410	F	39 970	16 530
Tallandoon ( Mitta Mitta River )	4.2	2.86	219.75	7 340	F	7 250	3 320
Heywoods	5.5	1.20	154.83	600	S	600	600
Doctors Point	5.5	2.90	151.37	13 200	F	12 610	5 070
Albury	4.3	1.98	149.42	-	-	-	-
Corowa	7.0	3.79	129.81	22 600	R	9 500	5 040
Yarrowonga Weir (d/s)	6.4	6.96	122.00	115 120	R	45 640	22 870
Tocumwal	6.4	4.47	108.31	30 570	R	24 380	21 160
Torrumbarry Weir (d/s)	7.3	6.76	85.31	32 330	R	28 260	24 930
Swan Hill	4.5	3.73	66.65	23 040	R	22 330	20 590
Wakool Junction	8.8	5.61	54.73	21 870	R	21 150	19 120
Euston Weir (d/s)	8.8	3.92	45.76	23 480	F	22 560	18 600
Mildura Weir (d/s)	-	-	-	22 820	F	21 730	16 130
Wentworth Weir (d/s)	7.3	4.26	29.02	20 200	S	19 270	14 490
Rufus Junction	-	4.52	21.45	13 350	R	11 770	6 920
Blanchetown (Lock 1 d/s)	-	0.80	-	12 800	R	10 090	6 300
<b>Tributaries</b>							
Kiewa at Bandiana	2.7	2.93	156.16	9 750	F	12 900	5 420
Ovens at Wangaratta	11.9	12.58	150.26	69 480	F	51 740	23 050
Goulburn at McCoys Bridge	9.0	8.04	99.46	21 970	R	18 900	18 630
Edward at Stevens Weir (d/s)	-	3.48	83.25	5 040	F	4 150	2 930
Edward at Liewah	-	2.68	58.06	2 140	R	1 950	1 530
Wakool at Stoney Crossing	-	1.82	55.31	1 490	R	910	190
Murrumbidgee at Balranald	5.0	0.78	56.74	450	F	1 130	1 700
Barwon at Mungindi	-	4.31	-	3 680	F	3 190	1 770
Darling at Bourke	-	5.23	-	9 820	S	9 800	10 010
Darling at Burtundy Rocks	-	0.75	-	160	F	170	170

<b>Natural Inflow to Hume</b> (ie pre Dartmouth & Snowy Mountains scheme)	79 260	28 110
---	--------	--------

**Weirs and Locks**

**Pool levels above or below Full Supply Level (FSL)**

Murray	FSL (mAHD)	u/s	d/s		FSL (mAHD)	u/s	d/s
Yarrowonga	124.90	-0.17	-	No. 7 Rufus River	22.10	+0.04	+2.20
No 26 Torrumbarry	86.05	-0.50	-	No. 6 Murtho	19.25	-0.06	+0.52
No. 15 Euston	47.60	-0.26	-	No. 5 Renmark	16.30	-0.10	+0.61
No. 11 Mildura	34.40	-0.05	+1.29	No. 4 Bookpurnong	13.20	+0.00	+1.47
No. 10 Wentworth	30.80	-0.11	+1.62	No.3 Overland Corner	9.80	+0.01	+0.76
No. 9 Kulnine	27.40	+0.24	+0.07	No. 2 Waikerie	6.10	-0.04	+0.66
No. 8 Wangumma	24.60	-0.05	+1.50	No 1. Blanchetown	3.20	+0.00	+0.05

Murrumbidgee	FSL (m AHD)	relation to FSL	d/s gauge ht.		Flow (ML/day)
			local (m)	(m AHD)	
No. 7 Maude	75.40	+0.25	2.447	71.797	3974
No. 5 Redbank	66.90	+0.23	0.713	62.013	871

**Lower Lakes**

**FSL = 0.75 m AHD**

	(m AHD)
Lake Alexandrina average level for the past 5 days	0.39

**Barrages**

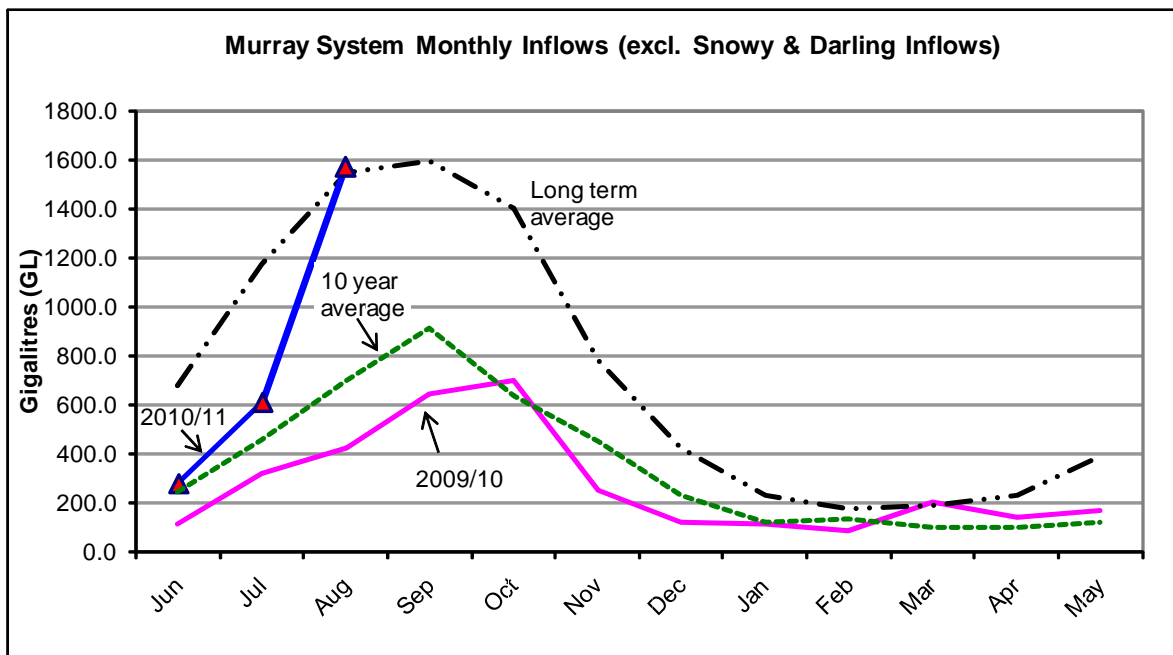
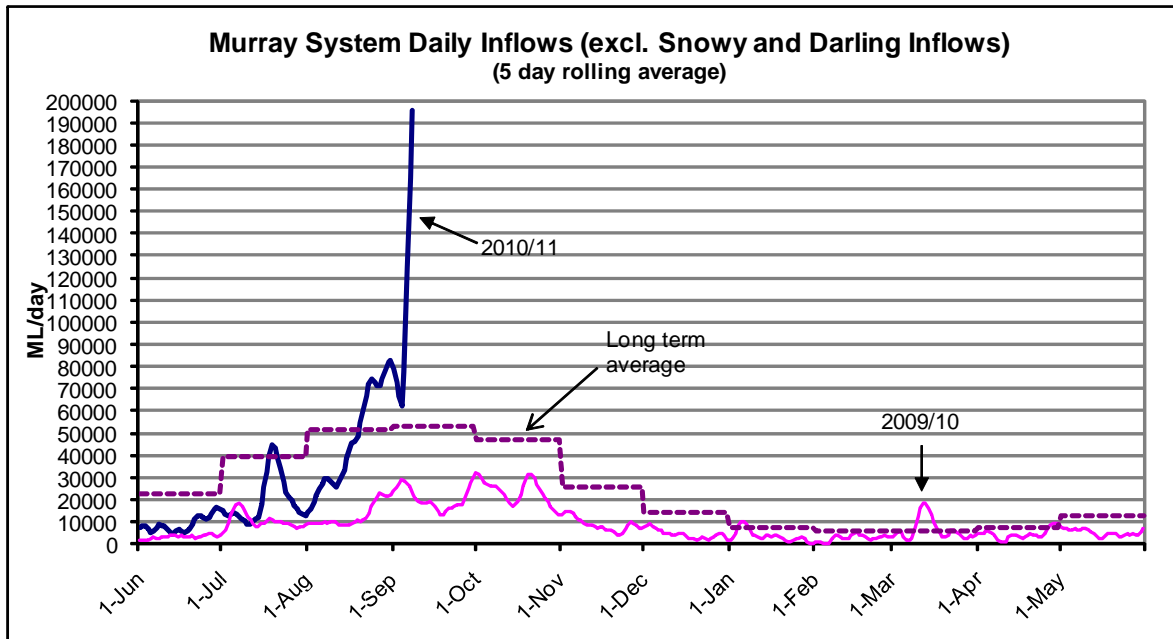
**Fishways @ Barrages**

	Openings	Level (m AHD)	Status	Rock Ramp	Vertical Slot
Goolwa	128 openings	0.78	All closed	-	Closed
Mundoo	26 openings	-	All closed	-	-
Boundary Creek	6 openings	-	All closed	-	-
Ewe Island	111 gates	-	All closed	-	-
Tauwichee	322 gates	-	All closed	Closed	Closed





Week ending Wednesday 8 September 2010



**State Allocations (as at 8 September 2010)**

**NSW - Murray Valley**

High security	97%
General security	8%

**Victoria - Murray Valley**

High reliability	57%
------------------	-----

**NSW - Murrumbidgee Valley**

High security	95%
General security	9%

**Victoria - Goulburn Valley**

High reliability	41%
------------------	-----

**NSW - Lower Darling**

High security	100%
General security	100%

**South Australia - Murray Valley**

High security	41%
---------------	-----

NSW : <http://www.water.nsw.gov.au/About-us/Media-releases/media/default.aspx>  
 VIC : <http://www.g-mwater.com.au/water-resources/allocations/current.asp>  
 SA : <http://www.waterforgood.sa.gov.au/category/news/>